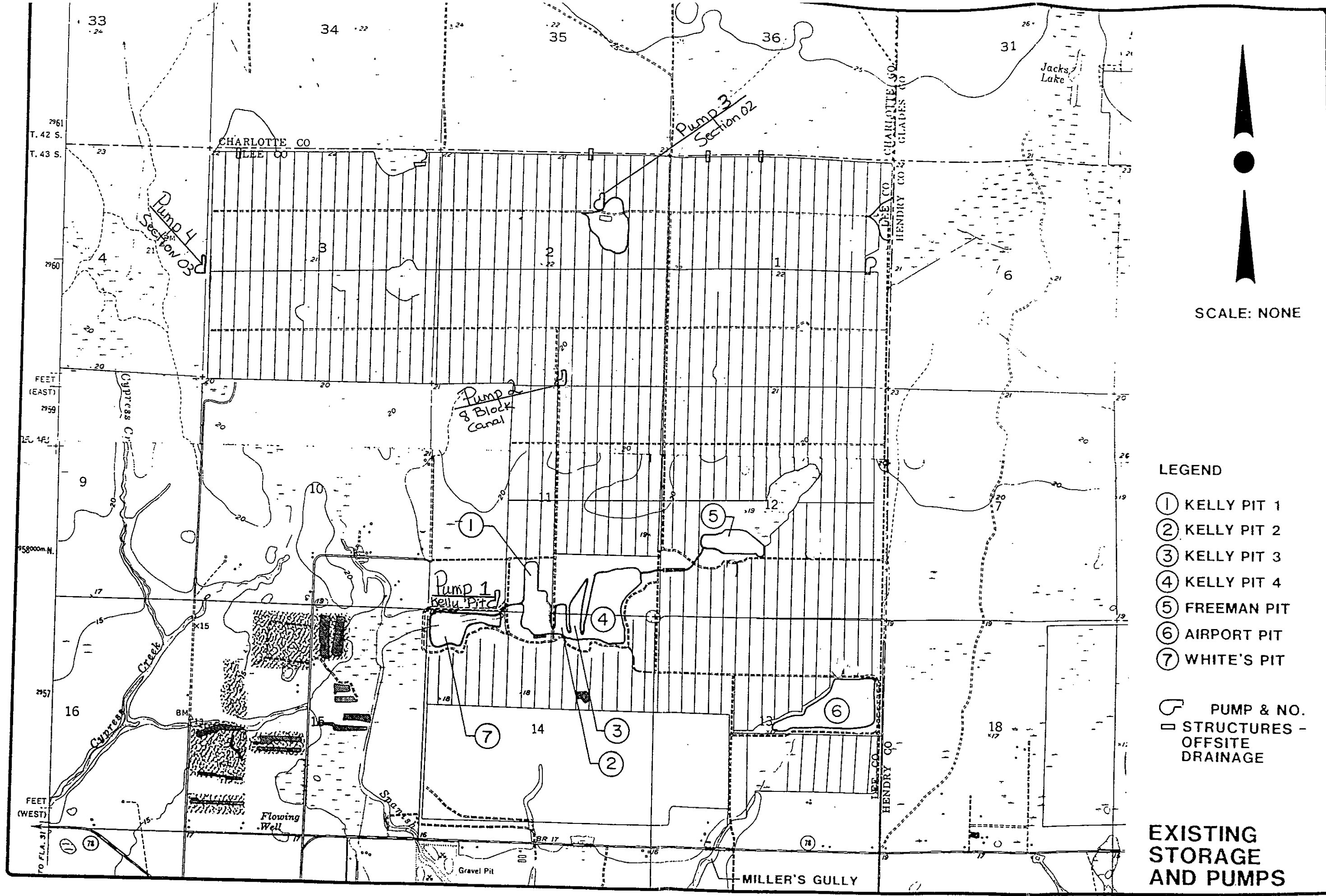


S. W. D. AND L. B. BOBER, INC.



- LEGEND**
- ① KELLY PIT 1
  - ② KELLY PIT 2
  - ③ KELLY PIT 3
  - ④ KELLY PIT 4
  - ⑤ FREEMAN PIT
  - ⑥ AIRPORT PIT
  - ⑦ WHITE'S PIT
- PUMP & NO.  
 STRUCTURES - OFFSITE DRAINAGE

**EXISTING STORAGE AND PUMPS**

FIGURE 2

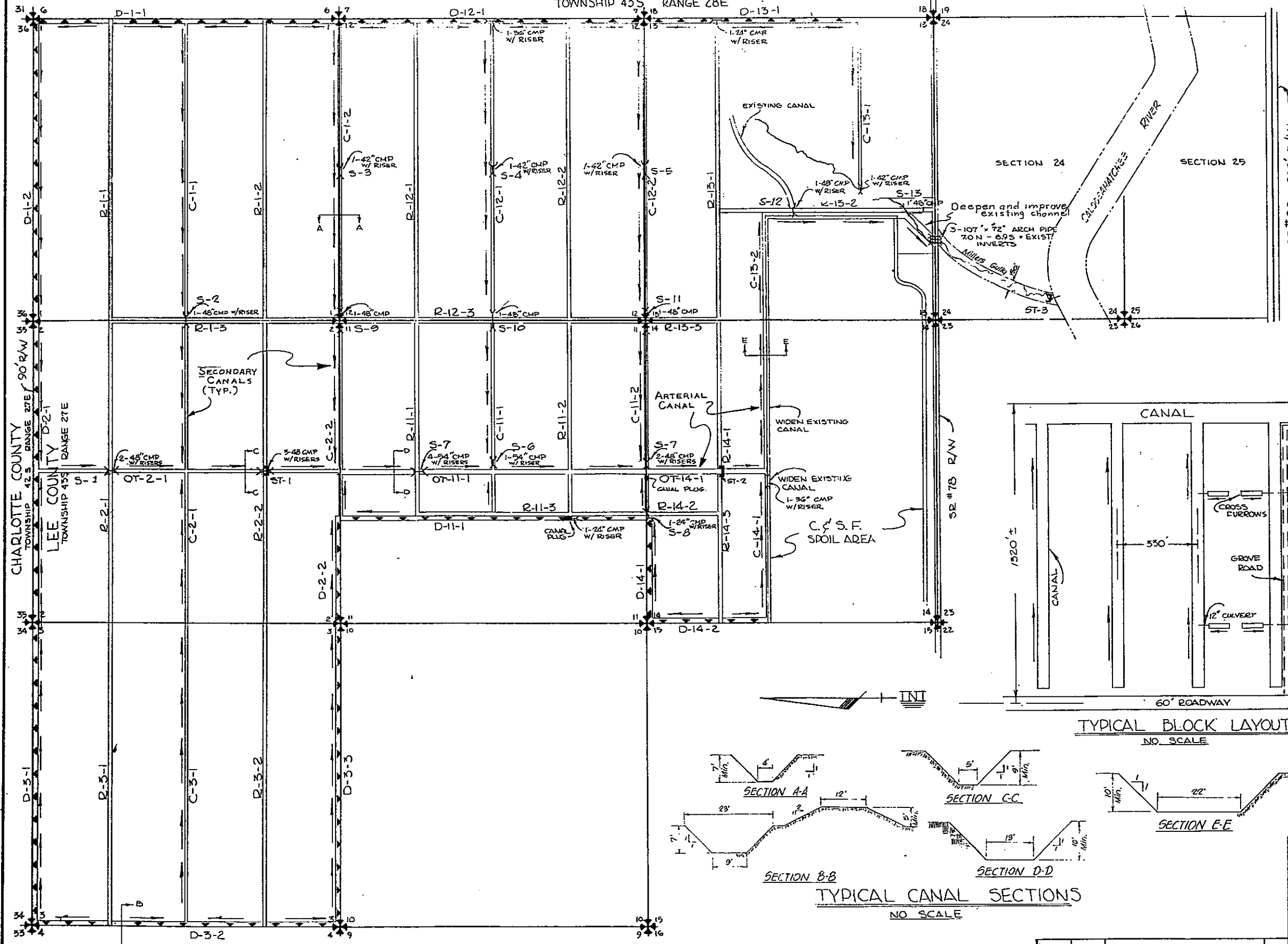
COUNTY LINE DRAINAGE DISTRICT IRRIGATION AND DRAINAGE ANALYSIS

Bojje Engineering Corporation

BEC PROJECT NO. OF-C88-100-00

FIGURE 1

HENDRY COUNTY  
TOWNSHIP 43 S RANGE 28 E

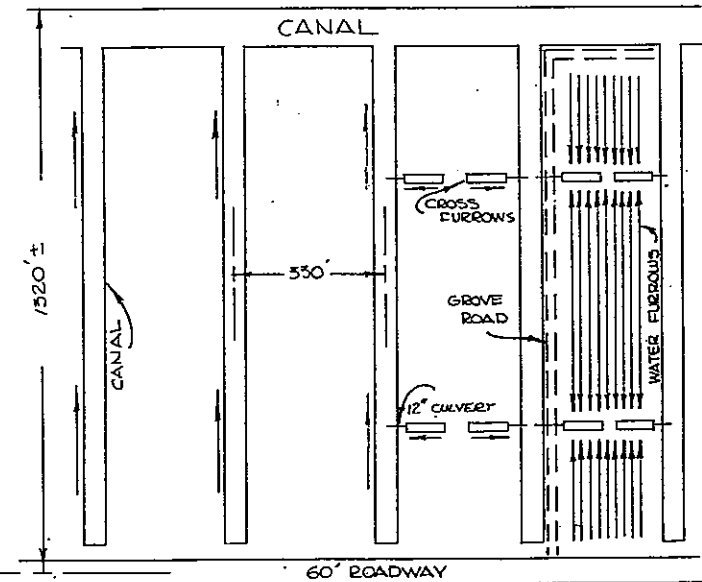


**LEGEND**

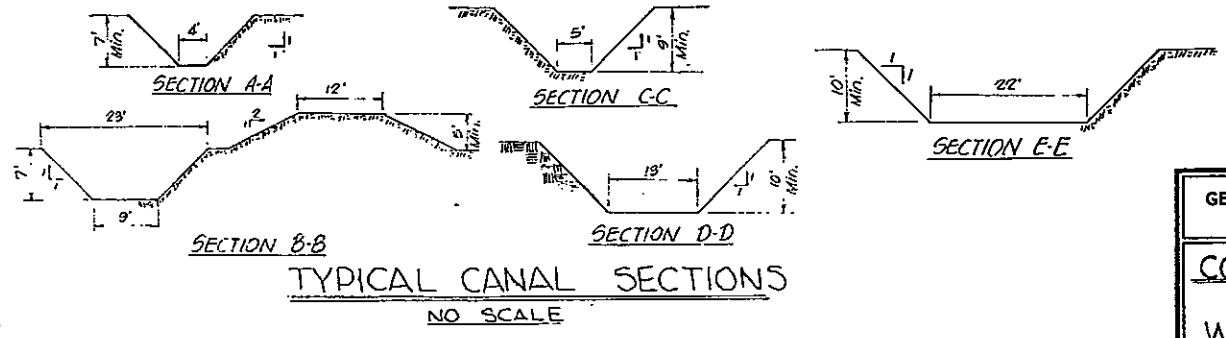
PERIMETER DIKE / CANAL	
ROADWAY R/W SHOWN	
CANAL R/W SHOWN	
CULVERT PLAIN	
CULVERT W/ RISER	
CONTROL STRUCTURE	

**LEGEND**

C	SECONDARY CANAL
D	DIKE
OT	OUTFALL CANAL
R	ROAD
S	CULVERT
ST	WATER CONTROL STRUCTURE



TYPICAL BLOCK LAYOUT  
NO SCALE

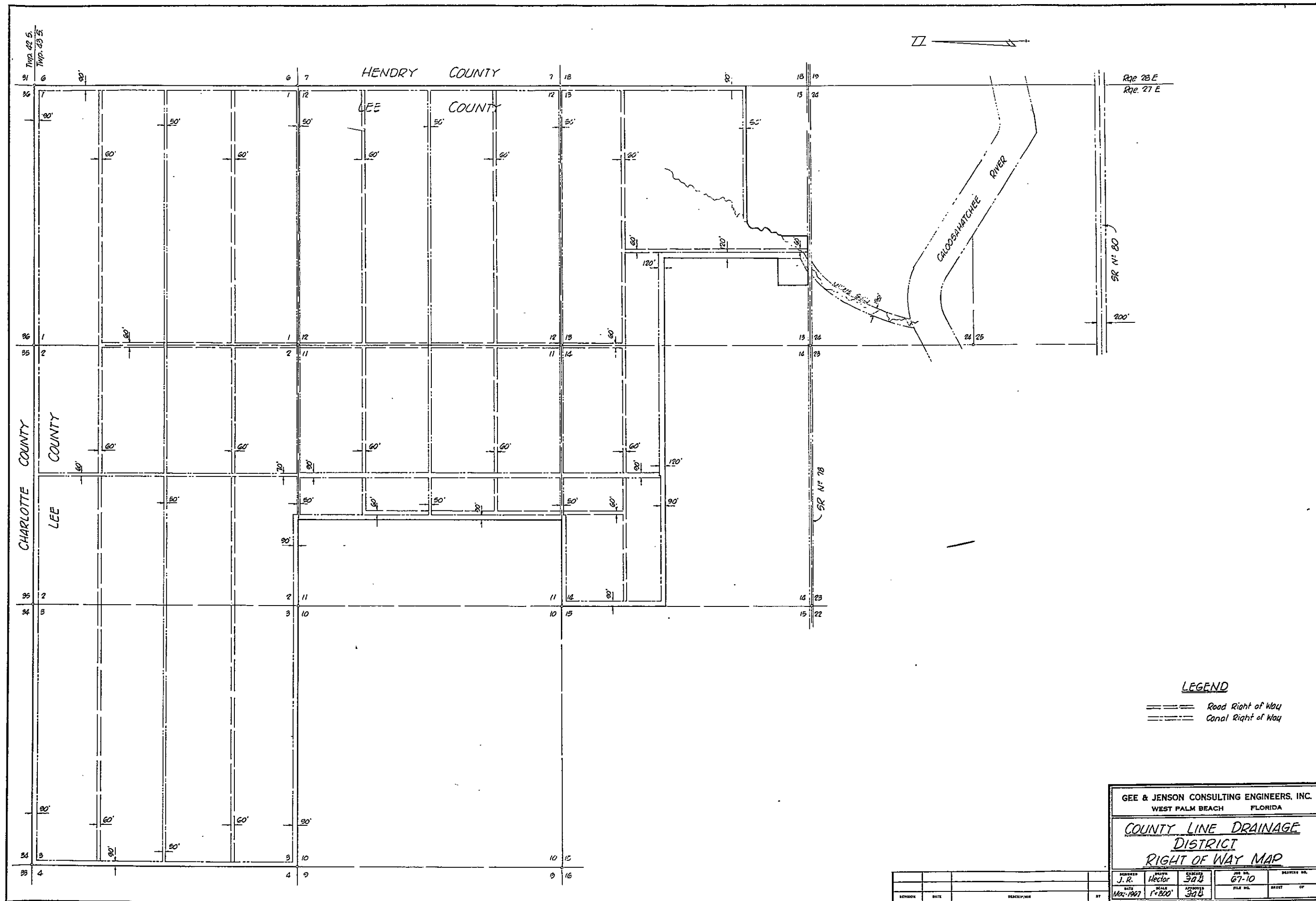


TYPICAL CANAL SECTIONS  
NO SCALE

GEE & JENSON CONSULTING ENGINEERS, INC.  
WEST PALM BEACH FLORIDA

**COUNTY LINE DRAINAGE DISTRICT WATER CONTROL PLAN**

DATE	6-10
SCALE	1" = 600'



**LEGEND**

- ==== Road Right of Way
- Canal Right of Way

GEE & JENSON CONSULTING ENGINEERS, INC.  
 WEST PALM BEACH FLORIDA

**COUNTY LINE DRAINAGE  
 DISTRICT  
 RIGHT OF WAY MAP**

DESIGNED BY J. R. Hector	CHECKED BY 392	JOB NO. 67-10	DRAWN BY
DATE Mar-1967	SCALE 1"=200'	APPROVED BY 392	FILE NO. SHEET OF

FIGURE 4

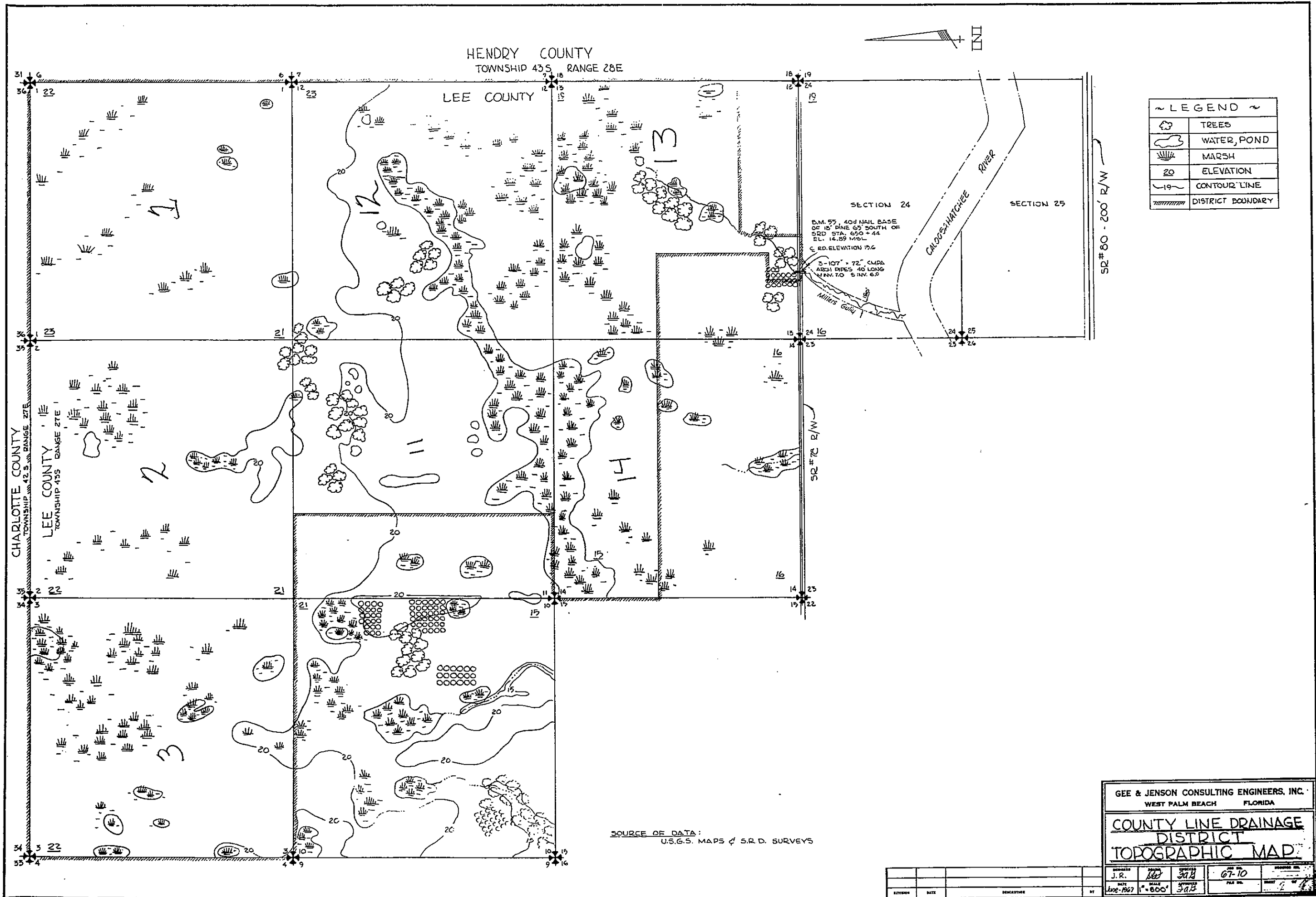


FIGURE 5

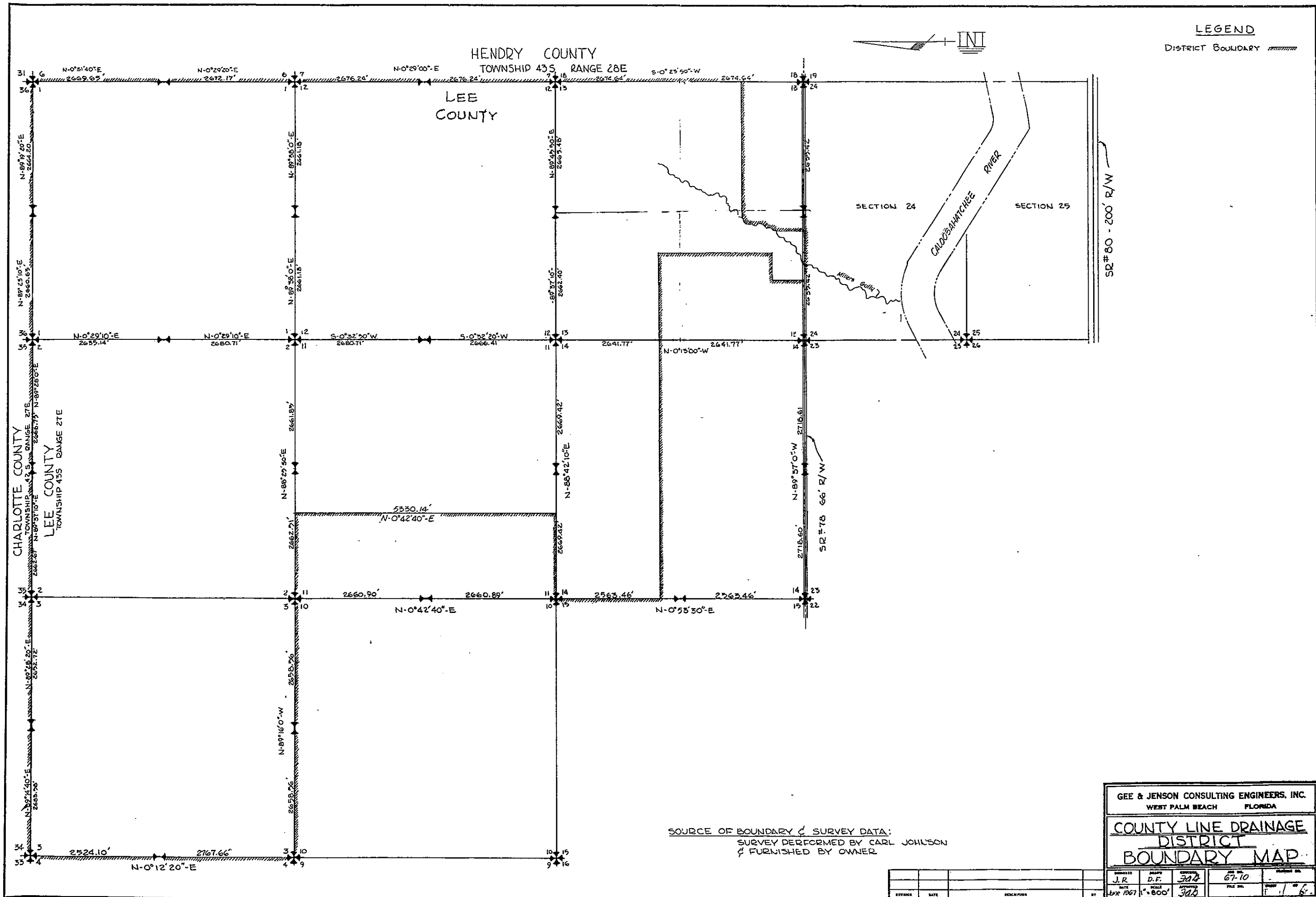


FIGURE 6